

This instrument prepared by and)
should be returned to:)

Robert L. Taylor, Esquire)
TAYLOR & CARLS, P.A.)
150 N. Westmonte Drive)
Altamonte Springs, FL 32714)
(407) 660-1040)

Cross reference O.R. Book 8252, Page)
2922, & O.R. Book 8677, Page 0890 of)
Public Records of Orange County, Florida)

DOC # 20090409207 B: 9903 P: 6297
07/17/2009 12:45:02 PM Page 1 of 6
Rec Fee: \$52.50 Doc Type: CONR
Martha O. Haynie, Comptroller
Orange County FL
MB - Ret To: TAYLOR & CARLS PA



**SECOND AMENDMENT TO THE
DECLARATION OF CONDOMINIUM**

**FOR
PLANTATION PARK PRIVATE RESIDENCES, A CONDOMINIUM**

THIS IS TO CERTIFY that the following constitutes the Second Amendment to the Declaration of Condominium for Plantation Park Private Residences, a Condominium, which was originally recorded in Official Records (O.R.) Book 8252, Page 2922, and which was previously amended by the First Amendment which was recorded in O.R. Book 8677, Page 0890 all of the Public Records of Orange County, Florida, (hereinafter collectively referred to as the "Declaration"). This Second Amendment is hereby duly and properly adopted by the Board pursuant to Section 718.110(5), Florida Statutes, to correct scrivener's errors in the condominium units listed below:

Set forth below are the corrections to the scrivener's errors in the apportionment of the Units contained in Exhibit "2" to the Declaration, as reflected in the corrected condominium plat depictions attached hereto as Exhibit "A":

Units 333 and 334 on Condominium Book 37, Page 59, were originally designated as unit type "C" unit, although these units were constructed as unit type "CS" units. The unit type designation for units 333, 334, 533 and 534 have been changed to reflect the correct unit type "CS" for these units.

Units 533 and 534 on Condominium Book 37, Page 63, were originally designated as unit type "C" unit, although these units were constructed as unit type "CS" units. The unit type designation for units 333, 334, 533 and 534 have been changed to reflect the correct unit type "CS" for these units.

Unit 7312 on Condominium Book 37, Page 67, was originally designated as unit type "A" unit, although this unit was constructed as unit type "AS" unit. Unit 7312 has been changed to designate Unit 7312 as a type "AS" unit.

The condominium unit originally designated as unit 8310, unit type "B," on Condominium Book 37, Page 69, is incorrectly numbered and incorrectly designated as a unit type "B" unit. Unit 8310, unit type "B," is actually Unit 8312 and was constructed as unit type "BS" unit. Unit 8310, unit type "B," is hereby renumbered as condominium unit 8312 and its designation is hereby changed to unit type "BS."

Executed at Orlando (city), Orange County, Florida, on this the 27th day of April, 2008, 9

Signed, sealed and delivered in the presence of:

PLANTATION PARK PRIVATE RESIDENCES CONDOMINIUM ASSOCIATION, INC.

[Signature]
Printed Name: Christina Lewis
[Signature]
Printed Name: DAVID W GRAVES

By: [Signature]
Printed Name: Kim Pecorella
Title: President

(CORPORATE SEAL)

[Signature]
Printed Name: Christina Lewis
[Signature]
Printed Name: Katie Ciccotelli

ATTEST:
By: [Signature]
Printed Name: Gabriel Castellana
Title: Secretary

STATE OF FLORIDA
COUNTY OF Orange

The foregoing instrument was acknowledged before me this 27th day of April, 2008, by Kim Pecorella and Gabriel Castellana, as President and Secretary, respectively, of Plantation Park Private Residences Condominium Association, Inc., a Florida not-for-profit corporation, on behalf of the corporation. They [X] are personally known to me or [] have produced _____ as identification.

(NOTARY SEAL)

[Signature]
NOTARY PUBLIC - STATE OF FLORIDA
Print Name: Katie M. Ciccotelli
Commission No.: DD0851059
Commission Expires: 1/13/2013



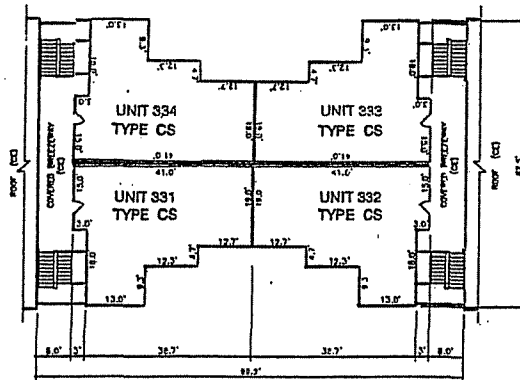
Ppr001 cert1

CORRECTED

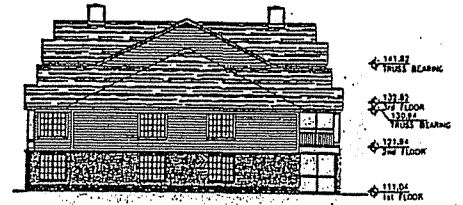
PLANTATION PARK PRIVATE RESIDENCES, A CONDOMINIUM

A CONDOMINIUM LYING IN SECTION 27, TOWNSHIP 24 SOUTH, RANGE 28 EAST, ORANGE COUNTY, FLORIDA

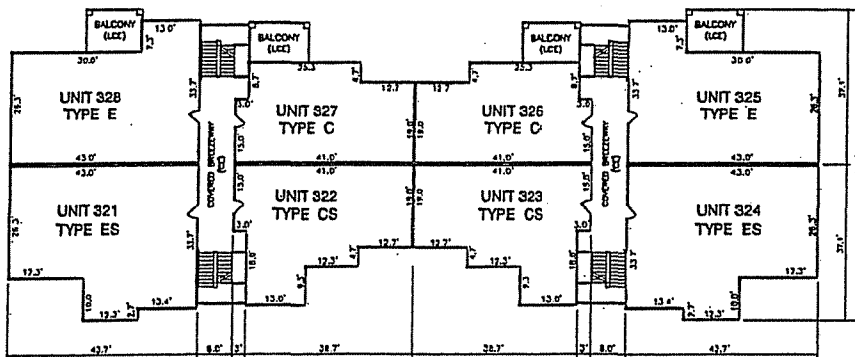
CONDOMINIUM BOOK 37 PAGE 59



3rd FLOOR PLAN



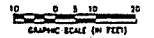
END ELEVATION



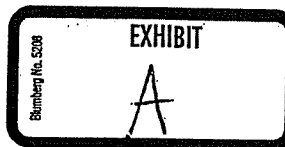
2nd FLOOR PLAN

LEGEND:
CS COMMON ELEMENT
LCC LIMITED COMMON ELEMENT

NOTES:
ALL DIMENSIONS ARE APPROXIMATE
ALL BALCONIES, BALCONIES AND PORCHES ARE LIMITED COMMON ELEMENT
ALL IMPROVEMENTS OUTSIDE OF THE UNITS AND NOT LABELLED LIMITED COMMON ELEMENTS ARE COMMON ELEMENTS



BUILDING 3
2nd & 3rd FLOOR PLANS
SHEET 10 OF 37

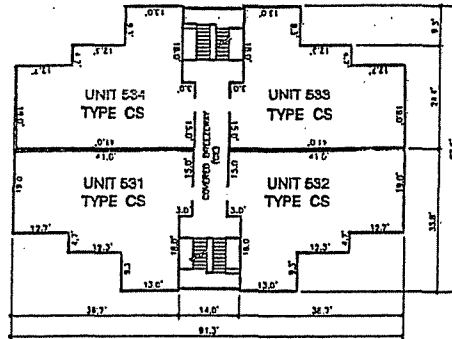


CORRECTED

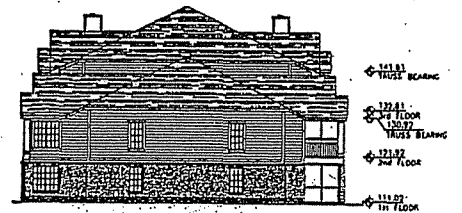
PLANTATION PARK PRIVATE RESIDENCES, A CONDOMINIUM

A CONDOMINIUM LYING IN SECTION 27, TOWNSHIP 24 SOUTH, RANGE 85 EAST, ORANGE COUNTY, FLORIDA

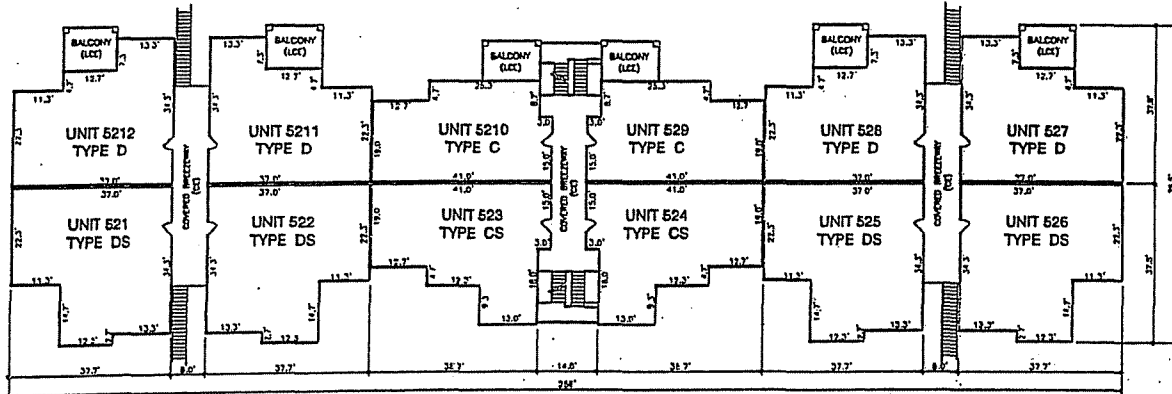
CONDOMINIUM BOOK 37 PAGE 63



3rd FLOOR PLAN



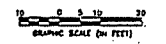
END ELEVATION



2nd FLOOR PLAN

LEGEND:
 CE COMMON ELEMENT
 LCC LIMITED COMMON ELEMENT

NOTES:
 ALL DIMENSIONS ARE APPROXIMATE
 ALL GARAGES, BALCONIES AND PORCHES ARE LIMITED COMMON ELEMENTS
 ALL IMPROVEMENTS OUTSIDE OF THE UNITS AND NOT LABELED LIMITED COMMON ELEMENTS ARE COMMON ELEMENTS

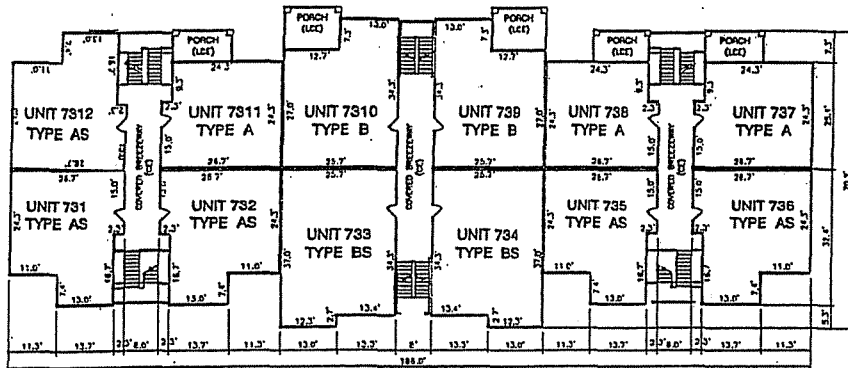


BUILDING 5
 2nd & 3rd FLOOR PLANS
 SHEET 14 OF 32

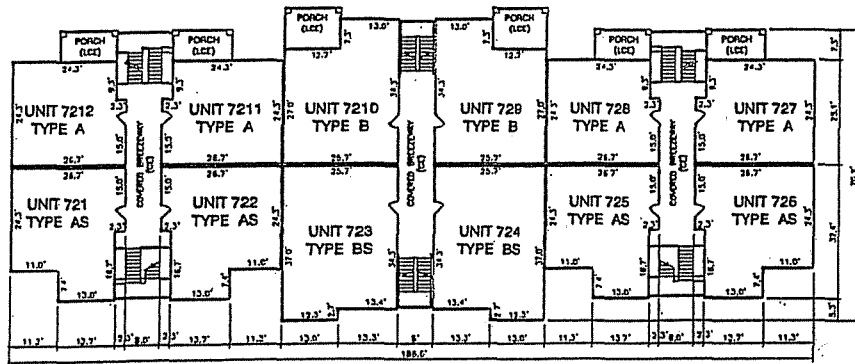
CORRECTED

PLANTATION PARK PRIVATE RESIDENCES, A CONDOMINIUM

A CONDOMINIUM LYING IN SECTION 27, TOWNSHIP 24 SOUTH, RANGE 16 EAST, ORANGE COUNTY, FLORIDA



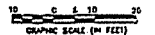
3rd FLOOR PLAN



2nd FLOOR PLAN

LEGEND:
 CL - COMMON ELEMENT
 LCC - LIMITED COMMON ELEMENT

NOTES:
 ALL DIMENSIONS ARE APPROXIMATE
 ALL BALCONIES, BALCONIES AND PORCHES
 ARE LIMITED COMMON ELEMENTS
 ALL IMPROVEMENTS OUTSIDE OF
 THE UNITS AND NOT LABELED LIMITED
 COMMON ELEMENTS ARE COMMON
 ELEMENTS



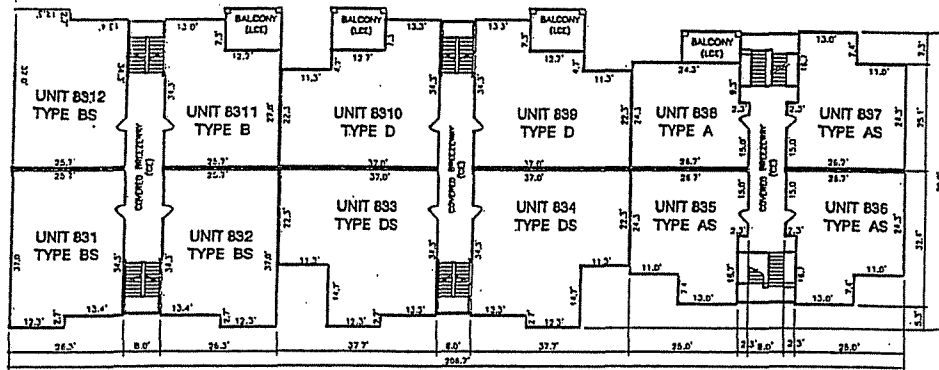
BUILDING 7
 2nd & 3rd FLOOR PLANS
 SHEET 18 OF 32

CORRECTED

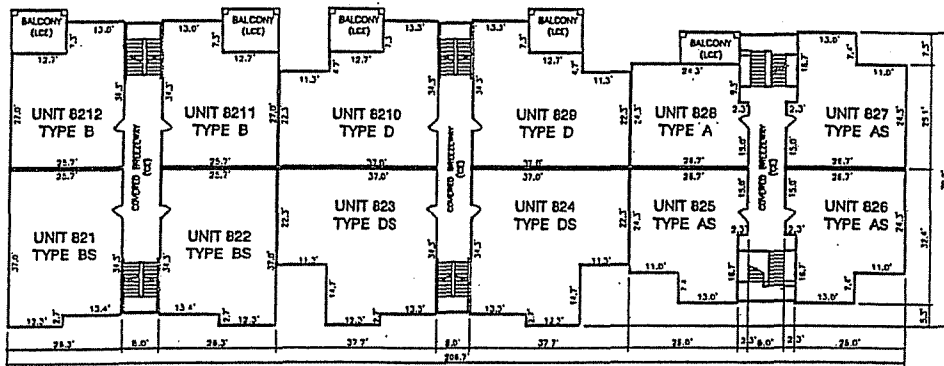
PLANTATION PARK PRIVATE RESIDENCES, A CONDOMINIUM

A CONDOMINIUM LYING IN SECTION 27, TOWNSHIP 24 SOUTH, RANGE 28 EAST, ORANGE COUNTY, FLORIDA

CONDOMINIUM BOOK 37 PAGE 69



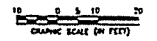
3rd FLOOR PLAN



2nd FLOOR PLAN

LEGEND:
 CE COMMON ELEMENT
 LCC LIMITED COMMON ELEMENT

NOTES:
 ALL DIMENSIONS ARE APPROXIMATE
 ALL GARAGES, BALCONIES AND PORCHES
 ARE LIMITED COMMON ELEMENTS
 ALL APPROPRIATE OUTSIDE OF
 THE UNITS AND NOT LABELED LIMITED
 COMMON ELEMENTS ARE COMMON
 ELEMENTS



BUILDING 8
 2nd & 3rd FLOOR PLANS
 SHEET 20 OF 32